

Bristol S Gauge Railroaders

# Time Table No. 70

FOR "S" ENTHUSIASTS ONLY

Effective 12:01 AM

**Monday, July 23, 2018**

EASTERN DAYLIGHT TIME

Superseding Time Table No. 60

Dated August 4, 2008

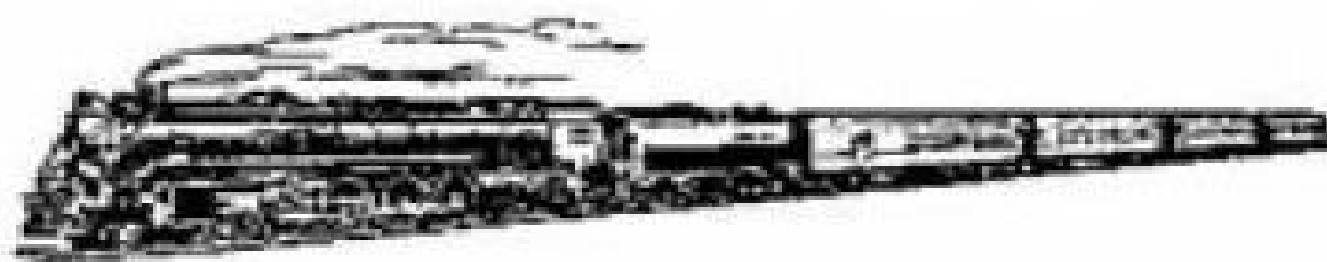


## *The New England S-Press*

STUDY SPECIAL  
INSTRUCTIONS AND  
NOTE ALL CHANGES

# PORT LINES HOBBY SUPPLIES

**"Specialists in American Flyer Trains,  
& all S-Gauge Railroading"**



**Doug Peck  
6 Storeybrooke Drive  
Newburyport, MA 01950  
Toll-free (888)-708-0782  
E-mail: [doug@portlines.com](mailto:doug@portlines.com)  
Phone hours: Monday through Thurs-  
day only,  
2—5 PM, Eastern time.**

**"New England's S-Gauge Specialists"**  
**We stock most major S—scale manufacturers, including:**

American Flyer by Gilbert  
S-Helper Service  
Royal Train Equipment  
S-Scale America  
Pneumatic Control Systems  
Kadee Couplers  
Imagineer Foam Cradles  
SnS Can Motors  
Kalmbach Publications  
Crown Models  
Heimbürger House Publishing  
American Flyer Wire  
Minuteman Models  
Z-Stuff Signals  
Tortoise Switch Machines  
Hunterline wood kits  
American Flyer™ Quality Paints  
ACE parts  
Balts Turntables  
Plasticville, & parts

American Flyer by Lionel  
Dallee Electronics  
Twin Whistle Structures  
Pine Canyon Models  
Classic Model Train Paints  
"Supersmoke" smoke fluid  
RP/CYC Publishing  
Timko Can Motors  
DSL Shops  
Banta Models  
MTH  
Ertl  
Artista figures  
American S-Gauge Track  
Reveresco figure sets  
Model Engineering Works  
Greenlight Vehicles  
Pre-Size Scenic Castings  
NJ International  
Downtown Deco

American Models  
Johnson Rubber Roadbed  
Lehigh Valley Models  
Gargraves Track  
An1 Smoke Fluids  
Greenberg Books  
TM Books & Videos  
K-Line  
Bar Mills Models  
Mount Blue Models  
RSSVP  
Pine Canyon Models-  
Model Tech Studios  
Motrak Models  
Fox Valley Track  
M2M Vehicles  
AHL-Hartoy Vehicles  
NOMA parts  
NASG  
AIII

**& MORE !**

**Subscribe to our monthly E-Newsletter to keep up-to-date on general "S" news  
and events, including timely announcements from manufacturers.  
Just send us an e-mail requesting to be added to our  
E-Newsletter distribution list.**

**OUR COMPLETE A.F. PARTS CATALOG IS ACCESSIBLE FROM  
OUR WEBSITE, FROM WHICH YOU CAN ORDER  
DIRECTLY & SECURELY.**

**ALSO AVAILABLE BY MAIL, FOR \$8.00 POSTPAID.  
FROM OUR WEBSITE, YOU CAN ALSO ACCESS & ORDER OUR  
CURRENT INVENTORY OF MANY  
S-MANUFACTURERS, INCLUDING  
AMERICAN MODELS, S-HELPER SERVICE,  
A.C. GILBERT, MTH, & LIONEL!**

**[www.portlines.com](http://www.portlines.com)  
[doug@portlines.com](mailto:doug@portlines.com)**

**BRISTOL S-GAUGE RAILROADERS**  
**“The Oldest S-Gauge Club in the Americas”**

**Club Officers:**

**President: Tommy Robichaud**

**Vice President: Helen Lenart**

**Treasurer: Chet Brown**

**Secretary: Dick Connors**

**2018 Convention Committee:**

**Tommy Robichaud - General Chair**

**Doug Peck - Convention Car**

**Chet Brown - Registrar**

**Bill Chase - Layout Tours**

**Jim Babish - Prototype Tours**

**Paul Riley - Vendor Hall, Model Contest**

**Helen Lenart - Clinics**

**Don Haiges - Transportation**

**Bill Clark - Website, On-Line Registration**

**Dick Connors - Printing, Handouts**

**John Ciarleglio - Hotel Liaison**

I want to thank our committee and club members who have provided support throughout the convention planning period and for their time and efforts during convention week to help make sure everything runs smoothly.

I especially want to thank the other ten committee members who have donated countless hours over the past three years to make sure that this would be our best convention ever.

**Tommy Robichaud**

**In Memorium:**

We wish to remember our club members who we have lost since our last convention in 2008:

**Charles Bachman**

**Alan Bliet**

**Bill Frazier**

**Jay Rogers**

**Rob Sieger**

**Ed Stead**

**Ben Perry**

**Reg Smith**

**Dan Lundy**

## Welcome

On behalf of the Bristol S-gauge Railroaders, I would like to welcome you all to the New England NASG S-Press Convention in Boxborough Massachusetts.

The convention schedule is loaded with events and activities and we are sure you will find many to suit your tastes! There are prototype and layout tours on Tuesday, Wednesday, Thursday and Friday as well as several non-rail tours on Tuesday, Wednesday, Friday and Saturday. We are offering a wide selection of rail and non-rail clinics throughout the week. The model contest room will be open to accept entries and for viewing Wednesday through Saturday, with judging taking place Friday afternoon.

On Wednesday evening we invite you to be our guest as we celebrate the Bristol Club's 70th Anniversary. Founded in 1948, we are the oldest S-gauge Club in the Americas.

With members located throughout New England our membership is diverse across gender and S-gauge interests including Flyer, high rail and scale. Most of our members have layouts which will be showcased in the convention layout tours and self-drive tours next Sunday!

We have chosen the Boxboro Regency for the great function space it offered but also for its 140 guest rooms which means that NE S-Press will be the hotel for the week allowing you the opportunity to easily socialize with other members of the NASG.

In my experience the NASG has always been like one big happy family!

Speaking of function space, there is the vendor hall, with over 100 vendor tables full of items that I'm sure you have on your wish list. Running throughout the time when the vendor hall is open will be a silent auction and Make sure you in the trade show when it's open as, we will be giving out door prizes randomly throughout day. The trade show will also feature four fantastic portable layouts from the Connecticut S Gaugers, the North Penn S Gaugers, the South Jersey S Gaugers and the S Scale Workshop from Canada!

Wrapping up the week, at 3:00 PM on Saturday will be the NASG annual meeting. Of course, the day concludes with the annual cocktail hour and banquet followed by one of my favorite's events, the live auction.

As you depart from the event on Sunday, a number of our members' layouts will be open, giving you one more chance to watch some s-gauge trains and visit with some of your New England S-gauge old and new friends!

Please enjoy your time here at the NASG S-Press and New England. If you have any questions or need any assistance, please talk to one of our Bristol S-Gauge club members who will be more than happy to assist.  
Enjoy and be safe!

Tommy Robichaud  
Convention Chair/Bristol Club President

## ACKNOWLEDGEMENTS

We want to thank the following for donations in support of the 2018 convention.

C&H Trains	Des Plaines Hobbies	Lionel
NE Prototypes	Port Line Hobbies	River Raisin Models
The Railroad Crossing	Hoquat Hobbies	Trains & More, LLC
Golden Girl Granola	M.T.H. Electric Trains	Wachusett Potato Chips
Heimbürger House Publishing Co.		Jim Kindraka

## VENDORS & EXHIBITORS

Jim Barker	Tom Barker	Al Boisse
C&H Trains	2019 Convention	Clickety Clack Toys
Gary Clark	Des Plains Hobbies	Bob Haladyna
Heimbürger House	Hoquat Hobbies	Jim Kindraka
Jimmy K's Trains	Jeff Madden	NE Prototypes
NE Railroad, LLC	Bill Oertly	Past Time Antiques
Pikesville Models	Port Line Hobbies	PS Model Specialties
River Raisin Models	Mike Rosenberg	Royal Train Equipment
The Railroad Crossing	Delores Rogers	S Scale Resource
Train & Trooper	The Train Collector	Trains & More, LLC
Two Foot Artist	Ken Zieska	Don Hasenzahl
Phyllis Sieger	Pre-Size Model Specialties	Dennis Hultay

Special thanks to the four clubs who brought their layouts to Boxborough for your enjoyment and inspiration

The Connecticut S-Gaugers  
The North Penn S-Gaugers  
The S Scale Workshop  
The South Jersey S-Gaugers

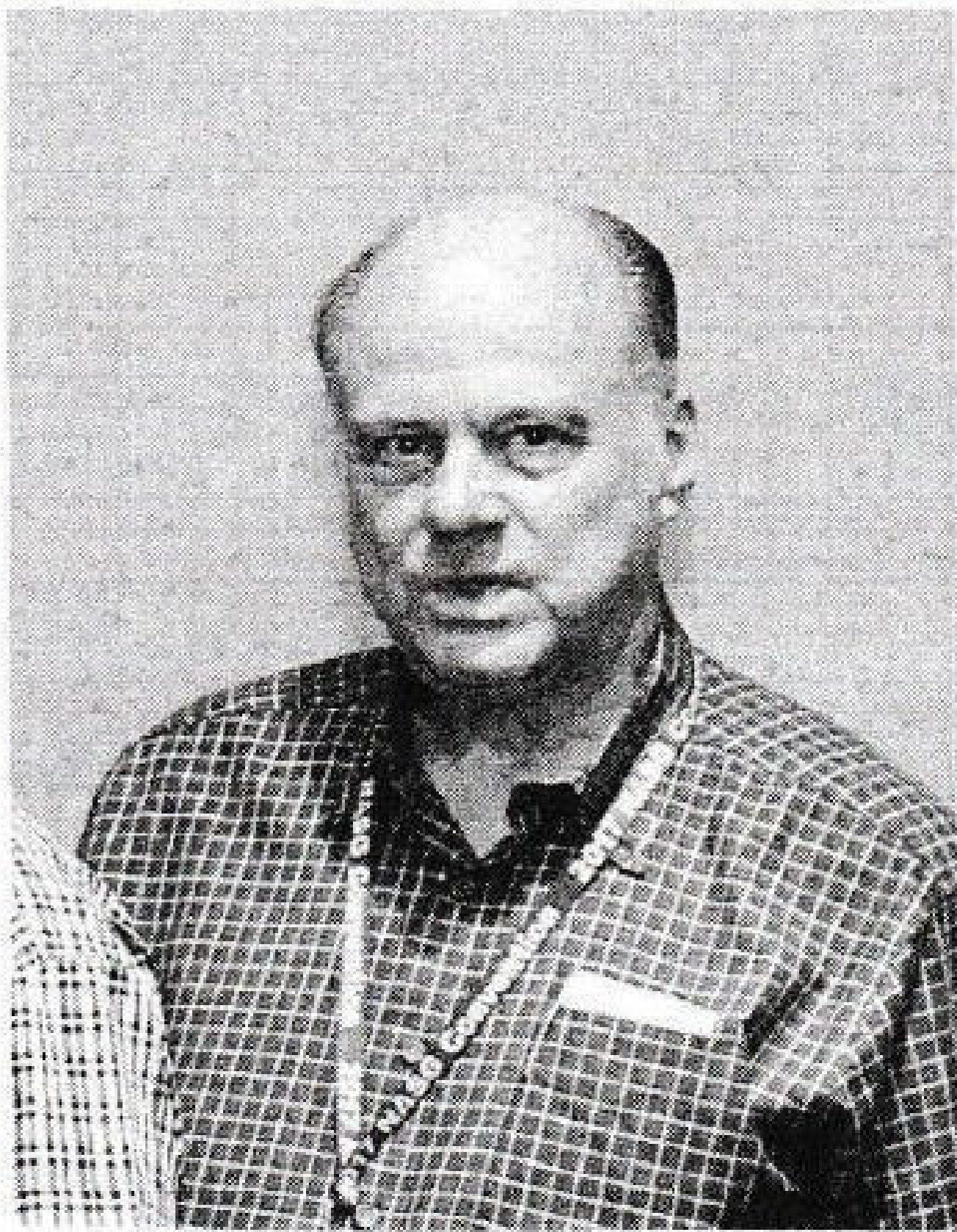
And we thank our 2018 Contest Judges

Alan Evans	Bill Morris	Steve Kutash
------------	-------------	--------------

We wish to thank our friends who have made their layouts available for the Sunday drive yourself visits. (Maps will be available later in the week at registration)

Gene Kelley, Dick Iannacone, Stan & Debbie Ames, Jim Babish,  
Terry O'Kelley, Tom Robichaud, John & pat Fucile, Bob Davis





Congratulations to Dick Karnes on his recent designation as an NMRA Master Model Railroader. Dick is a charter member of the NASG and as such, he has held several positions from the current Contest Chairman to Executive Vice President, and a long stint as Librarian. Dick is also an extraordinary modeler who is able to build locomotives from scratch, build amazing trackwork, and develop fantastic scenery with all its different aspects. Dick has written many articles about S scale for both the commercial and organizational magazines as well as sharing his expertise at many clinics. Dick was also the 1995 recipient of the Bernie Thomas Memorial Award. It is my privilege to be able to call him a friend and I can't think of a person more deserving of being designated by the NMRA as a Master Model Railroader,  
Bill Winans, Past-President, NASG

MONDAY - JULY 23

ACTIVITY	7:00	8:00	9:00	10:00	11:00	NOON	1:00	2:00	3:00	4:00	5:00	6:00	7:00	8:00	9:00	10:00	LOCATION
REGISTRATION DESK													7:00 - 10:00				DIRECTORS ROOM

TUESDAY - JULY 24

ACTIVITY	7:00	8:00	9:00	10:00	11:00	NOON	1:00	2:00	3:00	4:00	5:00	6:00	7:00	8:00	9:00	10:00	LOCATION
REGISTRATION	6:30 - 9:00					NOON - 3:00							7:00 - 9:00				DIRECTORS
DEALER HALL				HOTEL SET-UP ONLY													PARADE
NH RAIL & SAIL	WINNIPESAUKEE RAIL & BOAT TOUR 7:30 AM - 6:00 PM															BANQUET ENTRANCE	
NEWPORT MANSIONS	MANSIONS AND SHOPPING 7:00 AM TO 5:00 PM															BANQUET ENTRANCE	
LAYOUT TOUR #1													7:30 - 11:45				BANQUET ENTRANCE
RAIL CLINICS																	IVY
LADIES MEET & GREET													7:30 - 9:30				DECK



WEDNESDAY - JULY 25

ACTIVITY	7:00	8:00	9:00	10:00	11:00	NOON	1:00	2:00	3:00	4:00	5:00	6:00	7:00	8:00	9:00	10:00	LOCATION
REGISTRATION	7:00 - 10:00							2:00 - 5:00				6:00-8:00					DIRECTORS
DEALER HALL		SET-UP ONLY 8:00 - 5:00														PARADE ROOM	
MODEL CONTEST							ENTRANTS ONLY 1:00 - 7:00										BOARD ROOM
PALMER LAYOUT TOUR		PALMER LUNCH & LAYOUTS 8:00 AM TO 5:00 PM														BANQUET ENTRANCE	
DUCK BOAT TOUR		BOSTON & DUCKBOAT TOUR 8:00 AM TO 4:30 PM														BANQUET ENTRANCE	
LADIES LOUNGE			9:00 -4:00													BOXWOOD	
NASG BOD MTG												6:00-8:00					FERN
70TH BIRTHDAY														BIRTHDAY PARTY			COURTYARD
RAIL CLINICS												#1 6:00-7:30					SEMINAR
RAIL CLINICS												#2 6:30-7:30					DECK

THURSDAY - JULY 26

ACTIVITY	7:00	8:00	9:00	10:00	11:00	NOON	1:00	2:00	3:00	4:00	5:00	6:00	7:00	8:00	9:00	10:00	LOCATION
REGISTRATION	6:30 - 10:30												7:00				DIRECTORS
DEALER HALL						LAYOUT & DEALER SET-UP NOON-4:00							OPEN 7:00 - 10:00				PARADE ROOM
MODEL CONTEST									ENTRANTS ONLY 3:00 - 6:00				OPEN 7:00 - 10:00				BOARD ROOM
GREEN MOUNTAIN	RIDE THE GREEN MOUNTAIN RAILROAD BUS TOUR 7:00 AM TO 5:00 PM																BANQUET ENTRANCE
LADIES LOUNGE													7:00 - 9:00				BOXWOOD
RR CLINICS													#4				SEMINAR
NON RAIL CLINICS													#3				DECK



**FRIDAY - JULY 27**

ACTIVITY	7:00	8:00	9:00	10:00	11:00	NOON	1:00	2:00	3:00	4:00	5:00	6:00	7:00	8:00	9:00	10:00	LOCATION	
REGISTRATION			9:00 - NOON															DIRECTORS
DEALER HALL			TRADE SHOW 9:00 - 5:30													PARADE		
											ROOM							
MODEL CONTEST			MODEL CONTEST 9:00 - 5:00									JUDGING 6:00 - DONE					BOARD ROOM	
STURBRIDGE VILLAGE			OLD STURBRIDGE VILLAGE 9:00 AM TO 4:30 PM														BANQUET ENTRANCE	
LADIES LOUNGE			9:00 - 9:00													BOXWOOD		
LAYOUT TOUR #3													7:00 - 11:30			BANQUET ENTRANCE		
RR CLINICS			#6	#7	#8				#10								DECK	
			#11	#12	#13		#14	#15	#16								SEMINAR	
NON-RAIL CLINICS							#9										DECK	
							#5										IVY	



SATURDAY - JULY 28

ACTIVITY	7:00	8:00	9:00	10:00	11:00	NOON	1:00	2:00	3:00	4:00	5:00	6:00	7:00	8:00	9:00	10:00	LOCATION
REGISTRATION			9:00 - 11:00														DIRECTORS
DEALER HALL			TRADE SHOW 9:00 - 2:00				TEAR DOWN 2:00 - 5:00									PARADE ROOM	
MODEL CONTEST				MODEL CONTEST 10:00 - 2:00			PICKUP 2:00-4:00								BOARD ROOM		
LEXINGTON & CONCORD			LEXINGTON & CONCORD 9:00 AM TO 3:00 PM											BANQUET ENTRANCE			
LADIES LOUNGE			9:00 - 4:00											BOXWOOD			
NASG ANNUAL MEETING									3:00 - 5:00								SEMINAR ROOM
RR CLINICS			#17	#18													SEMINAR
			#19													DECK	
HAPPY HOUR											5:30 - 6:30						TERRACE
BANQUET													6:30 - 9:30			BALLROOM	
AUCTION															9:30-		BALLROOM



## SUNDAY - JULY 29

We are pleased to offer the following drive-your-self layout visits. You will find maps and directions at the registration table (Directors Room) on Saturday 9:00 to 2:00 and Sunday morning between 9:00 AM and 11:00 AM.

### EAST-partial

Gene Kelley - medium S highrail layout, full scenery  
159 Middle Road  
Byfield, MA 978-462-4172

### NORTH

Stan & Debbie Ames - large backyard G gauge layout  
8 Highgate Rd.  
Chelmsford, MA 508-930-0328 (Open House 10-4)

Dick Iannacone - large S scale layout with full scenery  
35 Swart Terrace  
Nashua, NH 603-493-3196

### WEST

Jim Babish - medium S high-rail layout with lots of action  
4 Tenney Circle  
Acton, MA 978-264-0072

Bob Cunningham  
9 Fisher Street  
Westborough, MA 508-439-1158

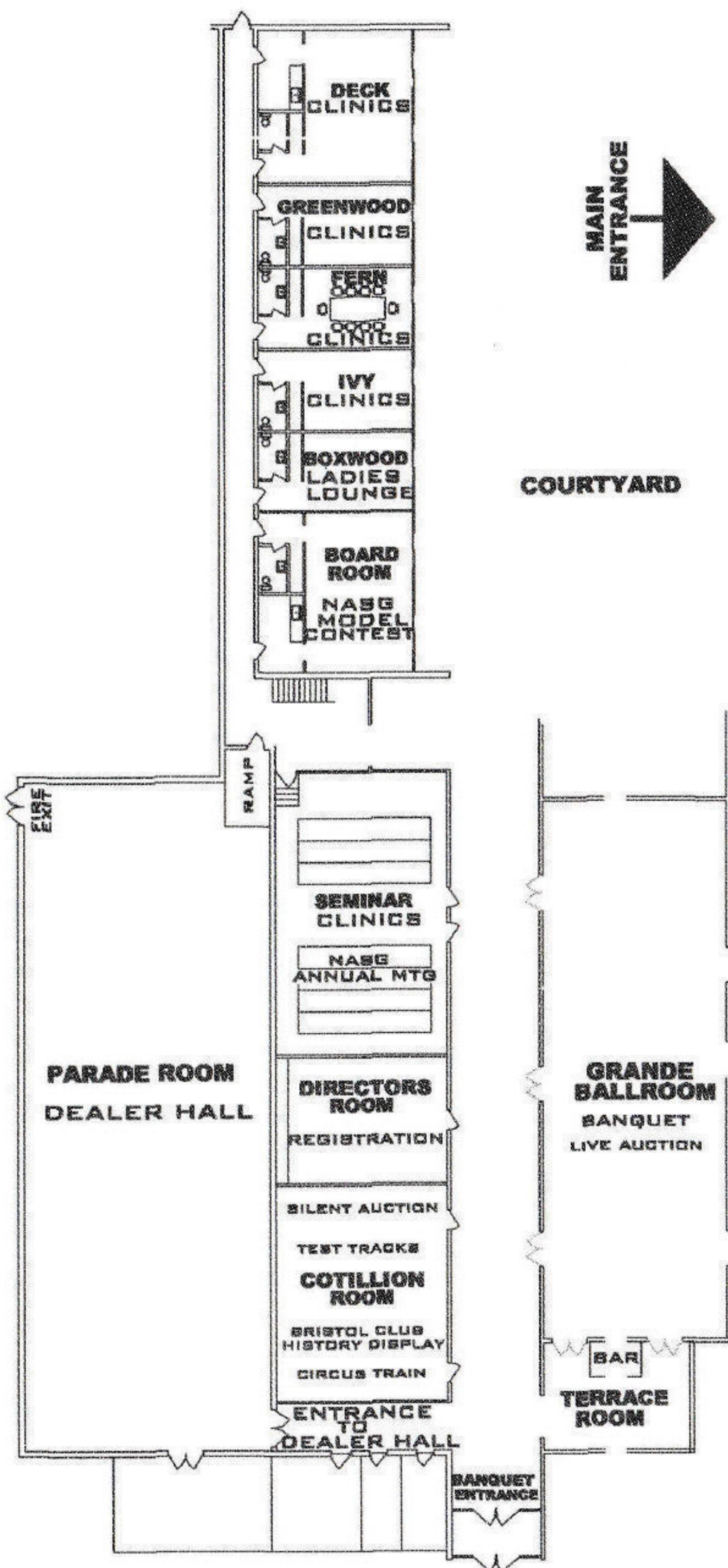
Terry O'Kelley  
200 Munroe Hill Road  
Carlisle, MA 978-371-2645

Tom Robichaud - large S high-rail layout full scenery  
19 Amiott Street  
Fitchburg, MA 978-345-3598

### SOUTH

John & Pat Fucile - medium American Flyer layout with  
many accessories  
196 Union Street  
Holbrook, MA 781-767-2769

Bob Davis - large S high-rail layout full scenery  
5 Bayberry Ridge  
Old Lyme, CT 860-434-7813



MAIN  
ENTRANCE

COURTYARD

FIRE  
EXIT

RAMP

PARADE ROOM  
DEALER HALL

SEMINAR  
CLINICS

NASG  
ANNUAL MTG

DIRECTORS  
ROOM  
REGISTRATION

SILENT AUCTION

TEST TRACKS

COTILLION  
ROOM

BRISTOL CLUB  
HISTORY DISPLAY

CIRCUS TRAIN

ENTRANCE  
TO  
DEALER HALL

GRANDE  
BALLROOM  
BANQUET  
LIVE AUCTION

BAR

TERRACE  
ROOM

BANQUET  
ENTRANCE

## TOURS

Please note that all busses will depart from the side (Banquet) entrance at the time specified in this timetable. Signs at the entrance will direct you to the proper bus for your tour.

### RAIL & LAYOUT TOURS

Tuesday 7/24      - Rail and boat tour on Lake Winnepesaukee  
                         -Layout visit to Bob Frascella, Don Haiges  
                         - and Bill Tarbox

Wednesday 7/25 - Layout tour (2 large S layouts) plus lunch and  
                         train watching at Steaming Tender Restaurant

Thursday 7/26    - Our primary tour - train ride on Green Mountain  
                         Railway from Bellows Falls to Ludlow, Vermont.  
                         Boxed lunch onboard.

Friday 7/27        - Layout tour to Phyllis Sieger, Tom Robichaud,  
                         and Jim Babbish

### NON-RAIL TOURS

Tuesday 7/24      - Newport Mansions and shopping

Wednesday 7/25 - Duck boat tour of Boston

Friday 7/27        - Old Sturbridge Village

Saturday 7/28     - Lexington and Concord historical visit

Also we are hosting a ladies meet-and-greet in the Deck Room from 7:30 PM to 9:30 PM on Tuesday night, There will also be a ladies lounge available in the Boxwood Room from Wednesday through Saturday. (See timetable for hours)



## **RAIL CLINICS**

### **WEDNESDAY EVENING**

#### **#1 Make it/Take it Clinic - Ken Zieska**

**6:00-7:30 PM Seminar Room**

Join Ken for a hands-on construction session assembling a pre-purchased kit with guidance from a nationally recognized modeler. Over two clinic sessions (second session is #8 in the Deck room from 11:00 AM to noon on Friday). The kit is a B&O Freight House from Lake Junction Models and can be purchased at registration for \$30. There is a limit of 25 modelers due to the number of kits available. Ken will have several glues, some of his suggested tools and paints for your use. However, you are encouraged to bring your own tools if available.

#### **#2 Ride the Rutland - Jeff English (NASG Eastern Vice President)**

**6:30 - 7:30 PM Deck Room**

An overview of the Green Mountain Railroad (now part of Vermont Rail System) and the former Rutland Railway line between Bellows Falls and Ludlow, Vermont. Jeff is an avid member of the Rutland Railroad Historical Society and will give a very informative talk about things to look for on our primary rail tour on Thursday.

### **THURSDAY EVENING**

#### **#4 Railroads in the Civil War 1861 - 1865 - Roy E. Jones III**

**7:00 - 8:00 PM Seminar Room**

This talk will discuss some interesting or little known aspects of railroads in the Civil War. We will talk about how Rail and Massachusetts troops were involved in the first battle. How was Massachusetts involved in getting troops to Washington? Who tricked the B&O Railroad? Who stole locomotives without track and then stole track to build a railroad? Who was Henry Haupt and what did he invent that we still model to this day? Was he a Prophet in his writing and work? The costly big dig wasn't the first in Massachusetts. Hear about it! We'll see that Taunton, Mass had a big role for Civil War railroads. As we talk, we will see how effective the U.S. Military railroad System was. It followed Grant almost all the way to Appomattox for the surrender.

### **FRIDAY CLINICS**

#### **#6 Decal Wet Transfer method-step-by-step - Geoff Graeber**

**9:00 - 10:00 AM Deck Room**

This system provides for the precise application of decals to a surface using quality masking tape to delineate where the lateral and inferior margins of the decal will be located. Methods will be presented for both the right and left handed modeler.



## **RAIL CLINICS**

### **FRIDAY CLINICS Continued**

#### **#7 Scenery: The World around your Trains**

**Pat Fucile and Phyllis Sieger**

**10:00 - 11:00 AM Deck Room**

See how suggestions and ideas about perspective, history, people, your hobbies and whimsy can enhance scenery and help make your layout uniquely yours. Learn about non-commercial sources to explore from your back yard to your kitchen and junk drawers. Watch as two dioramas start with a building and then a scene is created around them using these ideas. Share some of your ideas with us as well. After all, in this case, "The world is what you make it!"

#### **#8 Make it/Take it - part two - Ken Zieska**

**11:00 - Noon Deck Room**

See #1 on Wednesday for info, same group in session

Note; there will also be a table next to Ken's sales table in the vendor hall which be available for on your own kit assembly for up to 3 modelers anytime the vendor hall is open.

#### **#10 Understanding 3D printing for S gauge - Bob Frascella**

**3:00 - 4:00 PM Deck Room**

A basic introduction to 3D design and printing and how it benefits S scale modelers. The clinic will walk the modeler through obtaining and using free design software, basic 3D design, and how to print the design using a commercial printing company. An electronic copy of the presentation materials will be provided via email to all in attendance.

#### **#11 Digital Command Control Update - Michael Green**

**9:00 - 10:00 AM Seminar Room**

This clinic will provide an update in the area of NMRA DCC and its application to modeling in S. This includes updates on new products - both recent DCC products (systems, decoders, etc.) as well as products designed to use DCC. Also this clinic will touch on the topics of installation in S Gauge, tools that are useful with DCC, and related products and technologies like the layout control bus.

#### **#12 Going to Provincetown? Ride the Rails - Roy E. Jones III**

**10:00 - 11:00 AM Seminar Room**

Go for a train ride from Hyannis / Yarmouth down to Provincetown. Take in the sights through historic pictures and some model railroading of actual locations. We'll be on a freight train so we will have to do some switching like Route 6 building materials in Brewster or some coal for Camp Wellfleet. We will talk about the construction of the Cape Cod Central and how Chatham was left out. Enjoy this entire ride with several stops along the way to switch the many industries which are now part of Cape history.

# **RAIL CLINICS**

## **FRIDAY CLINICS Continued**

### **#13 A.C. Gilbert - American Flyer Engine prototypes**

**Carl Byron - Boston & Maine Historical Society**

#### **11:00 - Noon Seminar Room**

A closer look at A.C. Gilbert engine models as toy trains and closely they followed the prototype from the small 0-6-0 Docksider to the Union Pacific 4-8-4 locomotive. If time permits, some more information on the works of A.C. Gilbert and the Mistro Magic Company.

### **#14 The Making of a New England Display - Stephan Lamb**

#### **1:00 - 2:00 PM Seminar Room**

Stephan, the owner of Stephan Lamb Associates, will give a 50 minute presentation on the making of the HO- Scale New England Model Railroad display at Gulliver's Gate in New York City. Also included will be highlights of the other countries represented at this miniature world showcase.

### **#15 Modeler's Tips, Tricks and Shortcuts - Malcolm Houck**

#### **2:00 - 3:00 PM Seminar Room**

This clinic elaborates on the specialty shop-made tools, jigs, templates, and soldering aids. We'll discuss some soldering tips along with scenery tips for modeling trees and also water.

### **#16 The Fabulous Gilbert American Flyer S Gauge Streamliners**

**A history by Bob Bubeck**

#### **3:00 - 4:00 PM Seminar Room**

The postwar period of American Flyer toy train production by the A.C. Gilbert Co. saw the offering of the sleekest and grandest diesel-electric streamline models of any manufacturer during the years from 1950 to 1964. The evolution and collectability of the ALCO PA / PB, Silver Bullet, and the NH EP-5 passenger sets are to be discussed as will details about early 1950's chrome plating processing on plastics and some intriguing pre-production examples that did not make it into production.. Given the New England location of the convention, we will explore McGinnis NH passenger equipment considered by Gilbert but never produced will also be included.



# **RAIL CLINICS**

## **SATURDAY CLINICS**

### **#17 Modeling Milk on your Layout - Ed Loizeaux**

#### **9:30 - 10:30 AM Seminar Room**

An interesting overview presentation of the dairy industry and its dependence on railroad transportation. A visual slide show follows the physical movement from cow to table. Emphasis is on horse-drawn carts, small trucks, trackside platforms, trains, interurban/trolley cars, can cars, creameries, ice houses, ice harvesting, icing machines, bulk milk cars, entire milk trains, pasteurization, homogenization, bottling plants, larger trucks and conversion of milk to other products such as butter, ice cream, cheese, etc.. Each step of the process is illustrated with both prototype and model images, so the modeler can recreate all, or a portion, of the dairy industry on their home layout.

### **#18 DecalS- Dry Transfer method Step-by-Step - Geoff Graeber**

#### **10:30 - 11:30 AM Seminar Room**

Using a Diagram that has enlarged the guiding diagram provided by the manufacturer to the exact size of the model you wish to letter: the placement and dimensions of the dry transfer can be located on the surface. Procedures for both right and left handed modelers will be addressed.

### **#19 American Flyer Repair - Don Hasenzahl**

#### **10:30 - 11:30 Deck Room**

Step by step demonstration of how to re-wick a steam locomotive smoke unit - starting with instructions on how to open up the locomotive and also advice on how to get the best smoke output.

## **NON-RAIL CLINICS**

### **THURSDAY EVENING**

#### **#3 Coconut Sugar Scrub Clinic - Deane Louise Greene**

**7:00 - 8:00 Deck Room      Attendee limit - 20**

Learn how to make your own Coconut Oil Sugar Scrub for yourself or to give as gifts. It is so simple and easy to make but it feels like an expensive spa treatment. The coconut oil moisturizes and is beneficial for your skin on so many different levels. The granular sugar exfoliates your skin to open up pores and give you a smoother feel. Essential oils can stimulate your senses with peppermint or citrus, or you can soothe with lavender. There will be several scents and non-staining colorants available. Use this luxurious homemade product anywhere on your body where you have dry or rough skin - soften the rough spots on your feet or moisturize and exfoliate your face. Rub a little into your hands after washing or use in the shower for silky soft skin. You'll be able to duplicate this anytime, anywhere, after completing this workshop. Supplies will be provided and you will be able to take home a jar of your own along with the recipe.

### **FRIDAY**

#### **#5 Simple Jewelry Making - Lynn Barnhardt**

**9:00 - 10:30 AM Ivy Room      Attendee limit - 15**

Bring your imagination for this fun clinic. You will get a chance to work with memory wire to create bright bracelets, earrings, and possibly even a necklace. No special jewelry making experience is needed. Examples of different combinations will be on hand for your inspiration. Lynn will provide all the supplies needed. There will be a small charge for supplies which will reflect the actual cost and will be collected at registration. Lots of colorful choices and styles will be available to make your own personalized jewelry pieces.

#### **#9 Chocolate - Herb of the Heart - Rivka Schwartz**

**1:00 - 2:30 PM Deck Room      Attendee limit - 20**

What can be better than relaxing with a chocolate treat? Travel through the history of chocolate while tasting chocolate as it was enjoyed at different times and places. Answer the question: is chocolate a decadent indulgence or a health food? What are its health benefits and where can you find ethically sourced chocolate? We'll discuss the art of making herbal chocolates and you will take home recipes.

#### **LADIES' MEET AND GREET - Hosted by our own Helen Lenart**

**7:30 - 9:30 PM Deck Room**

A chance to meet each other, hear more about non-rail events, and learn about activities in the local area. There will also be a **Ladies Lounge** in the **Boxwood Room** on Wednesday through Saturday. Check the included timetable for the times the room will be open.



## NASG 2018 MODEL & PHOTO CONTEST

This year the contest room is located in the Board Room (see floorplan) which you can access off the rear corridor. The sliding glass doors on the courtyard side of this room will be locked during the duration of the contest (through Saturday afternoon) for security reasons. The room will be open during judging (Friday night) but there will be no conversation with or near the judges. Anyone trying to have a conversation with a judge will be asked to leave the room.

Modelers and photographers will be able to present their entries based on the rules and qualifications as defined in the NASG Contest guide which will be available at the contest registration table. There is also a sample entry form to be used as a guide for providing as much pertinent information as space will permit (attachments are allowed) to help the judges to notice unique features and assembly methods employed for construction. Someone will be available for help with interpreting the NASG rules during the stated registration time slots.

The contest room will be open for entries on Wednesday from 1:00 PM to 7:00 PM, and Thursday from 3:00 PM to 6:00 PM. If you can't register during one of these times, you will be able to enter the contest on Friday morning from 9:00 AM till noon even though the room will be open to the general attendance during this time.

As stated above, Judging will take place on Friday night from 6:00 PM until completed. When the contest room opens on Saturday morning (10:00 AM) we plan to have the certificates and ribbons placed adjacent to each entry. The special awards (Best- In- Show, etc) will be presented during the banquet.

## NOTES

# Welcome to the 2018 Convention!

While here, stop by our booth to say hello and see our wide selection of S gauge trains and detail parts, magazines, books and more. If you don't yet subscribe



to the **S Gaugian**, the premier S scale magazine, sign up today at the booth and learn what's happening in S. Our **Sn3 Modeler** magazine, published twice a year, also contains lots of good information.



Pick up our 228-page **Scenery Unlimited S/Sn3 Catalog & Reference Manual** to take home with you — it's a gold mine of S goodies you'll not find anywhere else.

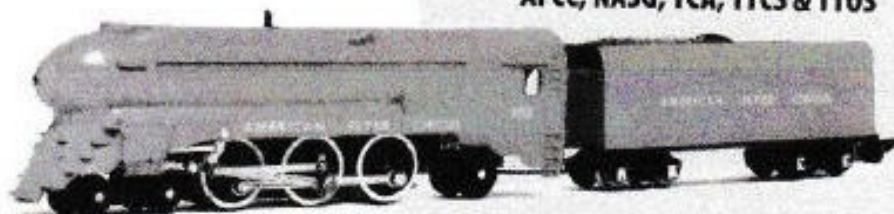
## Heimbürger House Publishing Co.

7236 West Madison St. • Forest Park, Illinois 60130  
708-366-1973 • [info@heimburgerhouse.com](mailto:info@heimburgerhouse.com)  
[www.heimburgerhouse.com](http://www.heimburgerhouse.com) • [www.sceneryunlimited.net](http://www.sceneryunlimited.net)

Todd & Bev Metcalf  
860-432-2124  
[www.trainsmore.com](http://www.trainsmore.com)  
[trainsmore@aol.com](mailto:trainsmore@aol.com)

## TRAINS & MORE, LLC

P.O. Box 1751  
Manchester, CT 06045-1751  
AFCC, NASG, TCA, TTCS & TTOS



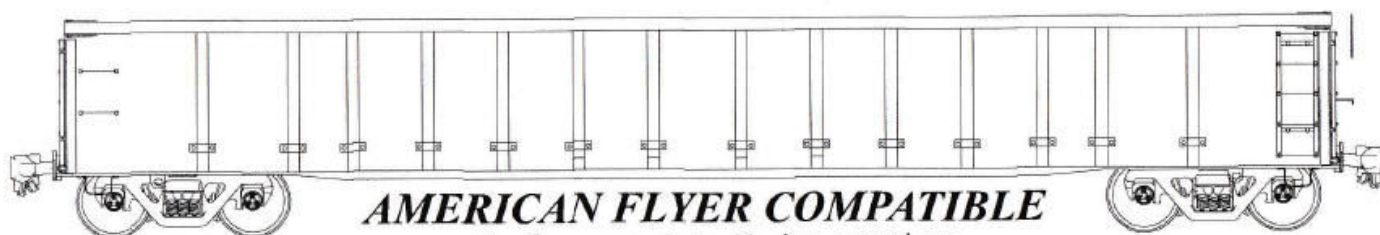
AF TRAINS & PARTS

**BEST WISHES**  
**For A Great Convention and**  
**Grand Gathering of Friends!**

Jim Kindraka  
Grand Rapids, MI



# *S SCALE'S NEWEST FREIGHT CAR* **THRALL 2743 GONDOLA**



***AMERICAN FLYER COMPATIBLE***

Easily converts to Kadee couplers

Available in 10 prototype paint schemes, 3 road numbers each \$59.98

**Des Plaines Hobbies/S Scale America**  
**1524 Lee Street Des Plaines, Il 60018 1-847-297-2118**  
**[www.desplaineshobbies.com](http://www.desplaineshobbies.com)**